

# Somerset, KY Economic Data Highlights

## Residential/Housing Statistics

- 4,695 residential properties within 1 mile of U.S. 27 corridor†
- 20,555 residential properties within 5 miles of U.S. 27 corridor†
- 31,443 housing units in Pulaski County\*
- 31,820 residential properties within 10 miles of U.S. 27 corridor†
- 108,966 housing units in the Labor Market Area\*†

(U.S. 27 corridor referenced includes U.S. 27 between KY 80 and KY 914)

†Taken from GIS data and parcel data from the Pulaski County PVA, 2011

\*U.S. Census, 2010

†Labor Market Area includes Adair, Casey, Laurel, Lincoln, McCreary, Pulaski, Rockcastle, Russell, and Wayne Counties, Kentucky

## Employment Migration Data

- 4,333 employees commuting into Pulaski County\*

\*U.S. Department of Commerce, Bureau of the Census, Journey-To-Work & Migration Statistics Branch, 2000

## Population Data

- 63,063 Pulaski County Population\*
- 255,055 Labor Market Area Population\*†

\*U.S. Census, 2010

†Labor Market Area includes Adair, Casey, Laurel, Lincoln, McCreary, Pulaski, Rockcastle, Russell, and Wayne Counties, Kentucky

## Population Projections\*

Pulaski County	2015	2020	2025	2030
	67,082	71,036	74,821	78,421

Labor Market Area†	2015	2020	2025	2030
	265,637	275,221	283,534	293,677

\*U.S. Census, 2010

†Labor Market Area includes Adair, Casey, Laurel, Lincoln, McCreary, Pulaski, Rockcastle, Russell, and Wayne Counties, Kentucky

### **Average Daily Traffic Counts\***

- 29,243 ADT near the U.S. 27/West Columbia Street intersection
- 28,217 ADT near the U.S. 27/Belmont Ave. intersection
- 27,286 ADT near the U.S. 27/KY 80X intersection
- 26,603 ADT near the U.S. 27/Bond St. intersection
- 25,918 ADT near the U.S. 27/Office Park Dr. intersection
- 21,551 ADT near the KY 80/Clifty Rd. intersection
- 20,227 ADT near the U.S. 27/Boat Dock Rd. intersection

\*Kentucky Transportation Cabinet Average Daily Traffic Counts, 2011

### **Pulaski County Income Data\***

- \$41,576 Median Household Income
- \$56,009 Mean Household Income

\*U.S. Census, 2010

### **Somerset Economic Indicators\***

- \$40,040 Manufacturers Shipments Per Capita
- \$39,355 Merchant Wholesale Sales Per Capita
- \$55,782 Retail Sales Per Capita
- \$3,198 Accommodation and Food Service Sales per Capita

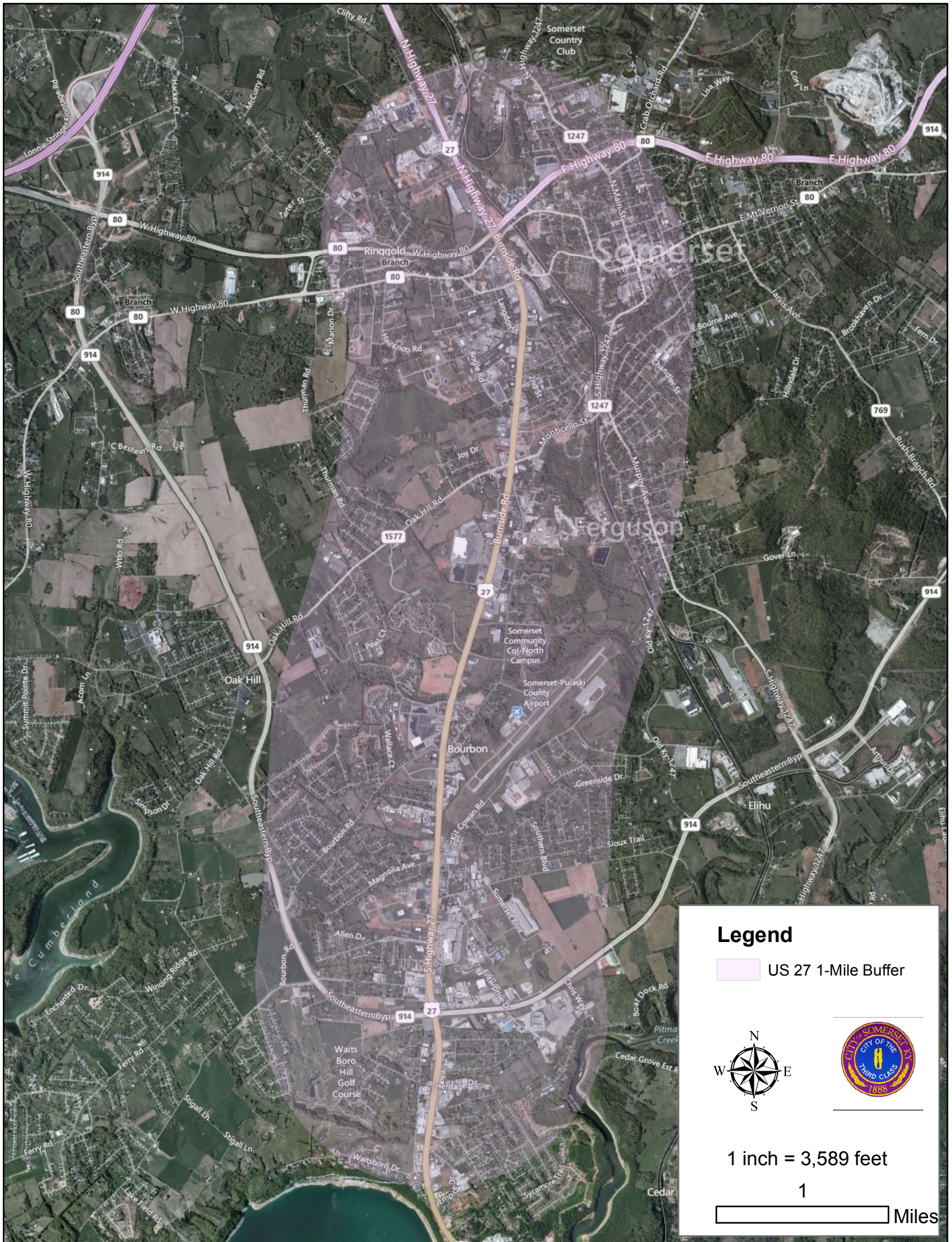
\*U.S. Economic Census, 2007; Based on City of Somerset population of 12,078

### **Lake Cumberland Tourism Data**


- 3.9 Million visitors, 2011\*

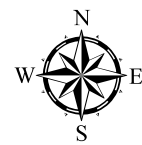
\*Somerset-Pulaski County Convention and Tourism Bureau, 2012





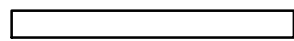
**Legend**

 US 27 1-Mile Buffer

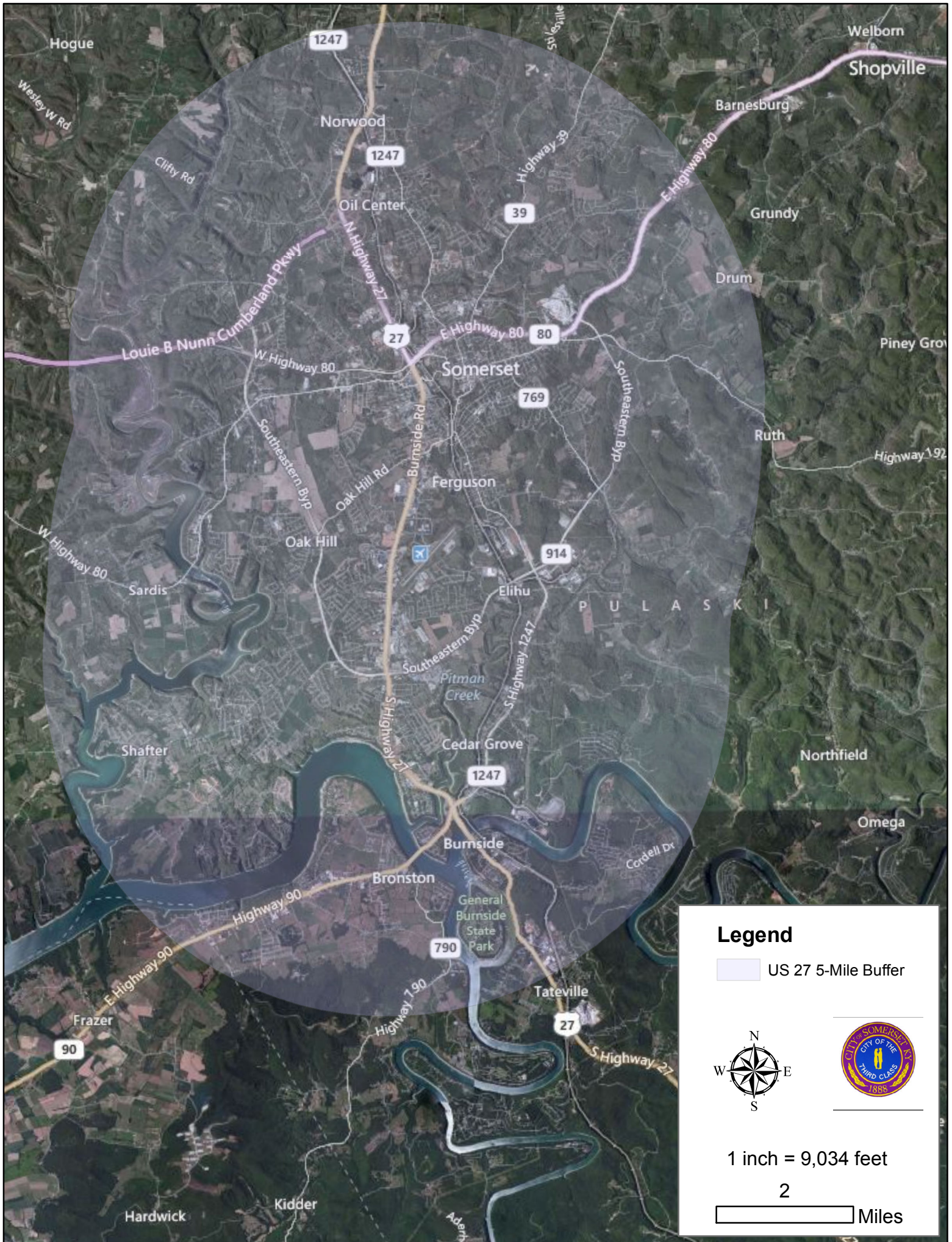


1 inch = 3,589 feet


1

 Miles





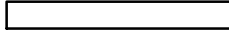
**Legend**

 US 27 5-Mile Buffer

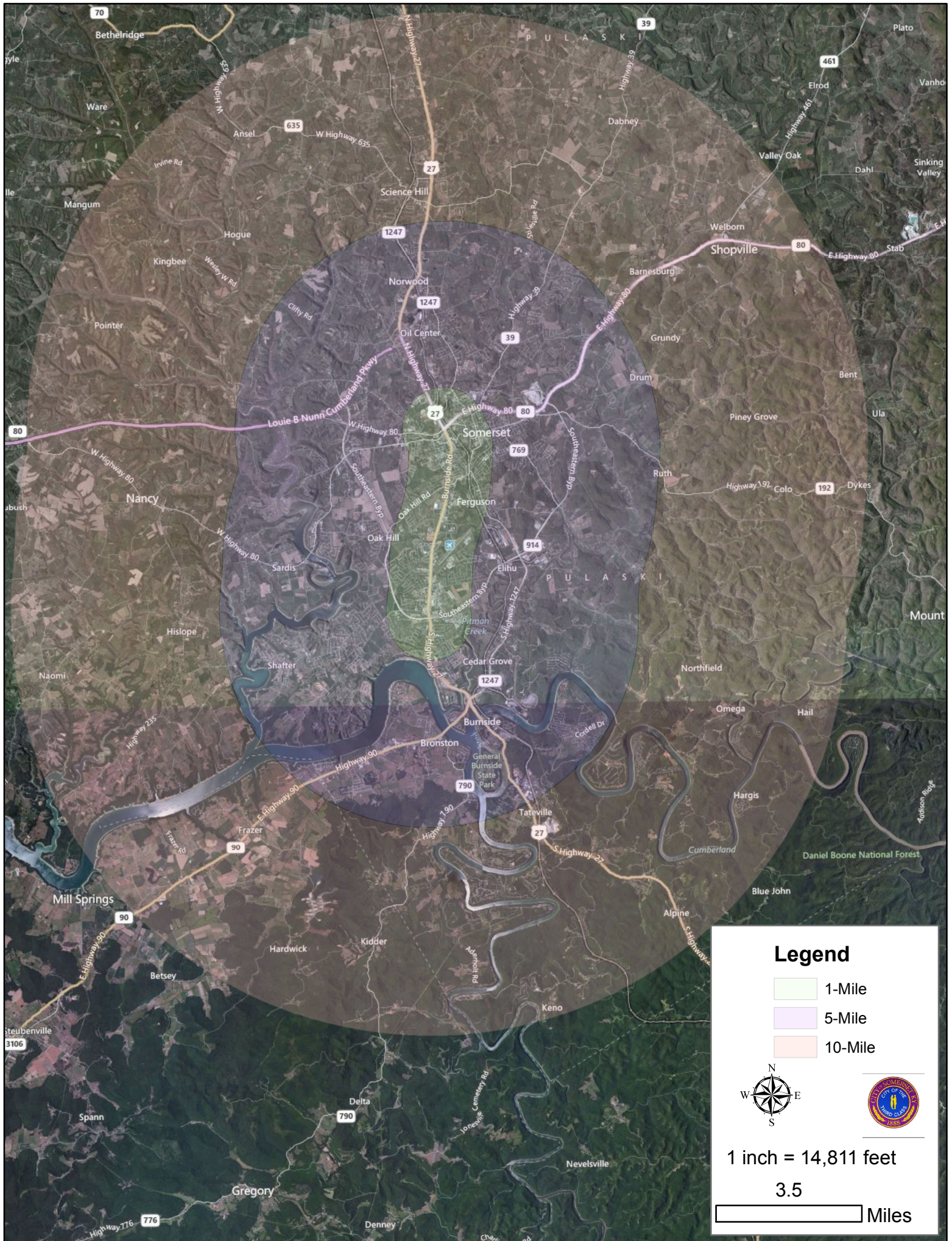


1 inch = 9,034 feet

2

 Miles





### Legend

- 1-Mile
- 5-Mile
- 10-Mile



1 inch = 14,811 feet

3.5

Miles