



Somerset

The Spirit of Southern Kentucky



Snow and Ice Removal Plan for City of Somerset 2019/2020

TABLE OF CONTENTS

	PAGE
<u>OVERVIEW</u>	<u>3</u>
<u>RESPONSIBILITIES</u>	<u>4</u>
<u>PRIORITIES</u>	<u>5</u>
<u>TREATING THE ROADS</u>	<u>7</u>
<u>CITIZEN RESPONSIBILITES AND TIPS</u>	<u>8</u>

APPENDICES

1. CITY OF SOMERSET COMMUNICATION FLOW
2. PRIORITY ROUTES IN OUR CITY
3. STATE ROADS
4. EFFECTIVENESS OF SALT

OVERVIEW

Snow and ice removal in Somerset is a combined effort by the various departments within the city. The Street Department is responsible for the coordination of the departments as we ensure that our 200 plus lane miles of streets are treated. Within our city limits, the Kentucky Transportation Cabinet (KYTC) is responsible for maintaining numerous roads. As part of their maintenance, they will treat, salt and plow these particular routes.

The purpose of the Snow and Ice Removal policy is to communicate the process to our citizens, those working within our city and to our employees. The goal of our city is to remove snow and ice from our roadways as rapidly and efficiently as possible to allow traffic to move safely throughout our city.

We begin planning for winter weather as soon as winter is over. Our equipment is inspected, repaired, serviced and stored in a protective environment. We debrief with our employees to determine what, if any changes need to be made to better serve our citizenry. We perform preventative maintenance on all spreaders, plows and trucks as we prepare for the upcoming winter. During our planning, we meet with all parties involved in snow and ice removal to ensure we each know our responsibilities.

Our Street Department is responsible for ordering and storing the road salt needed for our streets. The goal is to have at least 750 tons of salt on hand prior to winters arrival. During a normal snowfall for our area, we use approximately 25-30 tons per event to treat our streets. However, if a larger event occurs, the tonnage could double.

The purpose of the policy is to provide a general overview of the snow removal procedures of our city. We want our citizens to understand what our purpose and responsibilities are during a snow event. There are a variety of conditions that are unique to each event:

- Rate of snowfall,
- Presence of freezing rain or sleet,
- Temperature variations during and after the storm,
- Wind,
- Storm duration,
- Timing of storm,

We consider all these factors while establishing our procedures for snow and ice removal in our work to minimize the impact on our community.

RESPONSIBILITIES

The primary responsibility for removing snow and ice from our city streets rests on the Street Department. The Street Department utilizes 7 trucks equipped with salt spreaders and plows to fulfill this role. Our employees are each assigned a specific route and they are responsible for specific streets. We also utilize trucks equipped with salt spreaders and plows from the Water Department, Wastewater Department and the Gas Department. These trucks are equipped with larger plows and spreaders so they are assigned streets that are wider.

We monitor many different weather outlets during winter months to try and piece together the most accurate forecast for our region. When we get a clear picture of the impending weather, we determine what actions are warranted. If during our normal working hours, we will be here and be ready. However, if the storm is predicted to start after hours, we may determine to be at work and waiting on the inclement weather to start so we can be in front of the weather.

While we have 9 trucks with salt spreaders and plows, we also have other pieces of equipment we can and do utilize. With backhoes at our disposal, we use them to keep parking lots clean for our emergency services. We have certain areas we prioritize during snow and ice events as these areas represent areas of safety concerns. The Police Department, Fire Department and Emergency Medical Services (EMS) all receive special and constant attention to ensure their ability to respond to any emergency that may arise.

If a larger snowfall is expected, 5 inches or more, we encourage our citizens to take actions prior to the snowfall. If possible, we ask citizens to park their vehicles off the street so our employees can safely and efficiently clean the streets. Our plows are wide and it takes considerable room to maneuver them, especially on some of our very tight streets. With vehicles on the street, it takes them longer to clean the streets as they must dodge the parked vehicles.

When we do plow, driveways will have snow plowed in front of them. This is unavoidable as we cannot get the streets clear without this issue. While this is not our goal, it is the result. We cannot possibly clear all the entrances to every driveway after we plow as this would consume all our time. We do apologize for this issue, but it is unavoidable.

When we are called to work, we have communication flow that is always followed. **Appendix 1** details how communication within our city is followed during a snow event. The ultimate goal of all persons in our city is the safety of our public. Our employees take our responsibilities very seriously and with their knowledge and skill, they complete these tasks.

PRIORITIES

During snow and ice events, priorities are given to certain routes within our city. **Appendix 2** details these routes within our city. These routes are chosen based on emergency services, locations of nursing homes and the ability to get to major routes when these streets are serviced. This does not lessen the importance of every citizen and street, but does place priority on certain areas based on safety.

As stated earlier, we monitor numerous weather outlets when a snow event is possible for our area to get an accurate forecast for our region. While doing so, we determine what course of action we will take as a preventative nature. Normally, our winter weather starts as a rain and transitions to snow when the temperature falls. We would like to be able to put down a layer of salt prior to a snow event, but, with it starting as rain, it would wash the salt away. With that knowledge, we forgo, most of the time, this option. However, if we determine the snow event will begin as snow, we will place a layer of salt on our streets in an attempt to keep the snow and ice from bonding so tightly to our streets.

The timing of a storm can greatly affect snow and ice removal. Storms that occur during daytime hours will usually take longer to remove due to the amount of traffic that is encountered. Should the snow be of a depth that requires plowing, we will start with our priority routes and work our way to all streets. Removing all snow and ice is not always achievable as there are various circumstances that may alter our efforts. Those include:

- Equipment breakdown,
- Equipment rendered inadequate by the depth of the snow,
- Employee breaks and stopping for re-fueling,
- Refilling deicing materials,
- Parked or stalled vehicles,
- Traffic packing down the snow,
- Rate of snowfall.,

As part of our snow removal plan, we focus on areas that deal with public safety first. Streets around our Fire Department locations, Police Department, EMS, Somerset Fuel Center and the hospital will be our focus. These areas have a direct impact on public safety and must be maintained to allow our first responders to respond.

There are many roads within our city that we do not maintain as the KYTC is responsible for salting and plowing these roads. **Appendix 3** details the routes they are responsible to maintain.

PRIORITIES

While we do have priority streets and areas, it does not minimize the importance of every street in our city. Our larger trucks (3) are assigned to streets that are wider than most residential streets. With the larger trucks focusing on bigger streets, our other units can focus on routes where our smaller trucks are better equipped to maneuver.

Our priorities are to service every street as quickly as possible. Our staff is knowledgeable of their routes and the work that needs to be done to complete this work. We ask our citizens be patient with our employees as we fulfill our role of snow and ice removal. It takes time and just because the street you reside is not on the priority list, it doesn't mean your street will not be cleaned.

While developing the plan, we kept in mind the realistic capabilities of our employees and our equipment. The routes we have chosen as priority are based on traffic volume, access to emergency services, public safety and access to major arteries. During a heavy snow event, it may be necessary for our employees to go over the priority streets many times prior to getting to the secondary streets. When these streets are able to be safely traveled, we focus on the secondary streets and service those.

TREATING THE ROADS

During winter months, we monitor various weather sites to get the most accurate forecast for our area. Timing of the storm can create different problems and responses from our city. Most of our snow and ice events begin as rain and transition to snow. In this scenario, pre-treatment of roads is of no benefit as the pre-treatment would wash off prior to the snow and ice arriving. However, in our diligence, if we determine the weather event will begin as snow and several inches are forecast, we will put down a layer of salt to prevent the snow and ice from binding so tightly with the pavement. Salt has limitations, **Appendix 4**, has to the effectiveness it has during weather events. These limitations are in our preparations and in our strategy of attacking the snow and ice.

During snow events, our employees are tasked with the job of treating our streets. As a normal, it usually takes approximately 4 hours to salt all of our streets. Based on the weather, this may or may not, be sufficient to efficiently treat the streets. Should we need to do more, we will again run our routes and spread salt on any troubled areas.

Should the snow accumulate to around 3 inches, we will begin plowing operations. These operations, like salt spreading, will focus on our priority streets. Plowing streets takes much longer to complete as many streets must be gone over several times to achieve full coverage. Our employees will work fervently to clear the streets as quickly as possible. During plowing, it will take longer, so we encourage our citizens to be patient while we do our work. Should it be necessary to plow our streets, we will focus on our priority streets prior to working on others. When the priority streets are sufficiently cleaned and passable, we will turn our focus to our other streets and we will give them the proper attention.

CITIZEN RESPONSIBILITIES AND TIPS

Winter weather presents challenges that we do not face any other time of the year. As part of our plan, we have put together a list of responsibilities and tips that can help our citizens and our employees as we address the snow and ice event.

Before the snow or ice storm:

- Have your car checked for antifreeze, battery and tires
- Ensure your car is equipped with a flashlight, ice scraper, snow brush, blankets and warning devices.
- Move your vehicle off the street so plows can clear the streets in a safe efficient manner.

During a snow or ice event:

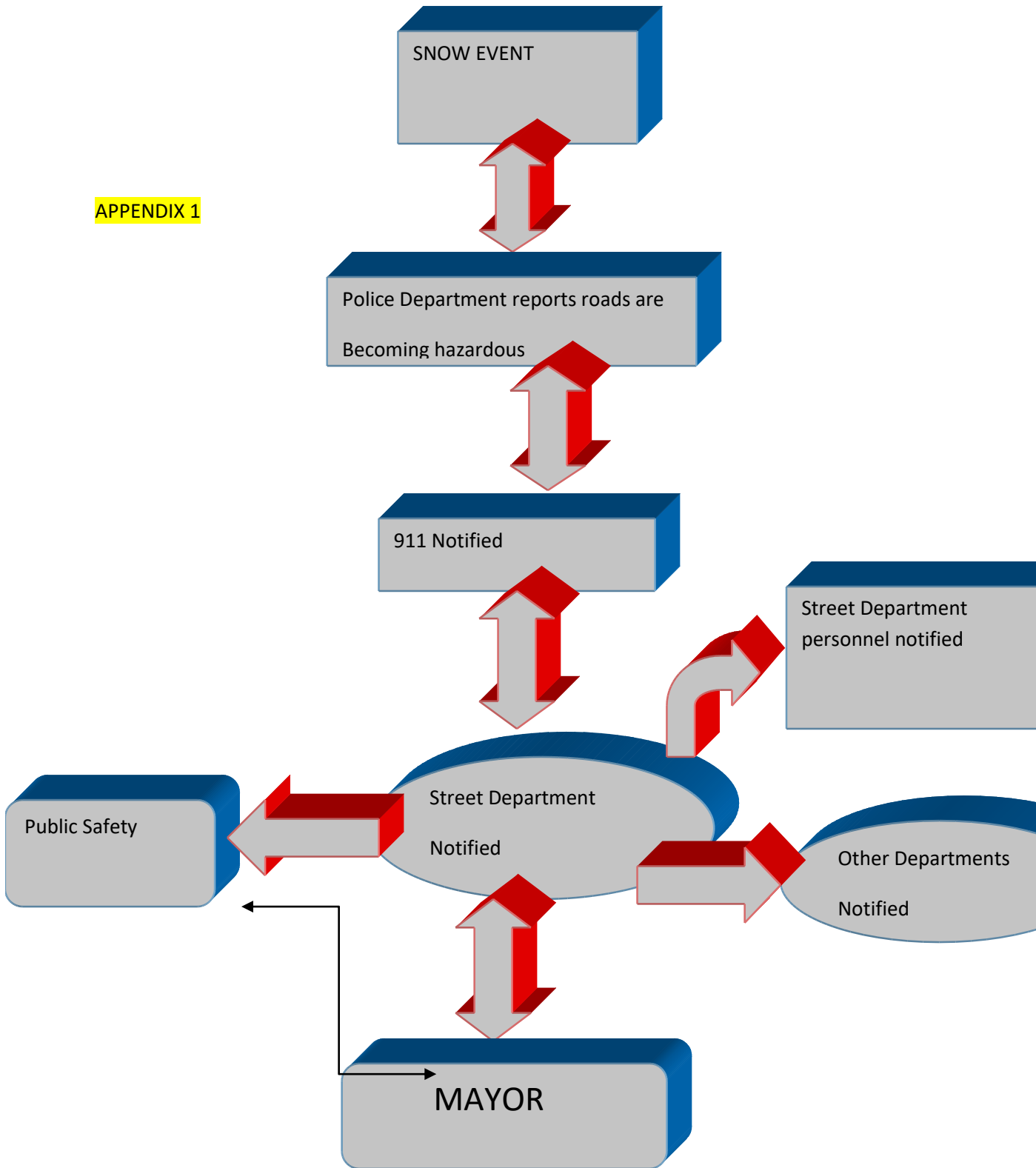
- Keep travel to a minimum unless an emergency does arise. If a state of emergency has been declared by the mayor, stay off the roads. If an emergency does arise, notify 911 and they can arrange care with the proper agency.
- If your car is parked outside, make sure the exhaust pipe and the area around it is clear before starting your vehicle. Restricted exhaust pipes can cause high levels of carbon monoxide inside your car.
- Keep snow clear from any hydrants in your yard.
- If you must travel, reduce your speed and increase following distances from the vehicle in front of you.
- Drive with your lights on at all times
- Avoid hitting your brakes hard as this will cause the vehicle to skid,
- Make sure all of your lights are free from snow so other motorists will be able to see your turn signals and brake light.

After the snow or ice event:

- Please do not shovel the snow back to the street,
- Please do not shovel the snow on top of drains,
- Please allow time for our employees to achieve safe passage of the streets,
- Snowplows will be travelling slowly, so please be patient,
- Do not pass a snowplow,
- If following a plow, do not follow too closely as visibility will be diminished due to snow clouds coming from the plows.

CITY OF SOMERSET COMMUNICATION FLOW

APPENDIX 1



APPENDIX 2

PRIORITY ROUTES

Grand Central Blvd
Kit Cowan Rd
Jacksboro St
Industrial Park
Dearl Whitaker
Bourne Ave
Norfleet Dr
Hail Knob Rd
Bogle St
W. Columbia, from US 27 to W.80
Oak Leaf Lane
E. Somerset Church Rd
Chappels Dairy Rd
Sycamore St
Barnett St
Langdon St from US 27 to Hwy 80
S. Central Ave
Hamilton Lane
Tradepark Dr
E. Limestone St
W. Limestone St
N. Maple St
E. Oak St
W. Oak St
Kimberly Dr
Speedway Dr
Gover St
Linda Lane
Mountain View Dr
Greenside Dr
Cotter Ave
Mardis St
Brookhaven Dr
Hillandale Dr
Electric Ave
Beecher St
Grove St
Grand Ave
Crawford Ave
Sallee St
Alexander Dr

APPENDIX 3

Roads maintained by the State Highway Department

East and West Mt Vernon
Public Square
College St
North and South Main
Crab Orchard St
Highway 39
Pumphouse Rd
University Dr
North 1247
Highway 2227
US 27
Highway 914
Monticello St
South Richardson Dr
Highway 80
Bypass 80
Jarvis Ave
Murphy Ave
Ringgold Rd
Oak Hill Rd
Hwy 3057
Tigers Way
Langdon St from US27 to Old Monticello St
Old Monticello St from Langdon to New Monticello St
UK Drive
Refinery Dr.
Clifty Rd. from US 27to City limits

APPENDIX 4

EFFECTIVENESS OF SALT

ICE MELTED PER ONE POUND OF SALT AT TEMPERATURE

