

AV and Theatrical Lighting RFP – The Virginia Cinema

Supporting Documents

Contractor shall provide design and installation of Audio, Video, and Theatrical Lighting systems for the Virginia Cinema.

The Virginia Cinema will be utilized by the City of Somerset as a multipurpose space for concerts, theatre productions, and events.

The Virginia Cinema is currently undergoing a major construction renovation project. The majority of infrastructure for the AV and Lighting systems has been included in the building construction contract. Components of the systems that have already been included are as follows:

- Backstage AV equipment rack with patch bays
- Cat6, XLR, and SDI cables routed from AV rack to stage floor boxes
- FOH Line Array speaker clusters – QSC KLA12 & KLA 181
- Tech Room AV equipment rack with patch bays
- SDI and Cat6A cables from backstage rack to tech room rack
- Cat6 cables routed to TV monitor locations as indicated on plan
- Four (4) batten bar location for mounting theatrical lighting
- Cat6 cable and power located at batten bar locations
- Cat6 cable routed from batten bar location to tech room AV rack
- DXM/RDM splitter for house lighting

Designs shall take into account the existing infrastructure and design layout. Bidding Contractors shall review the Construction Documents and provide all necessary infrastructure in their package that has not already been included.

Contractors shall include, at a minimum, the items listed in the attached “Scope of Supply” documents in their bid. The products listed are basis-of-design and shall be utilized to establish a standard for these proposed systems. Products that are submitted must be equivalent (or better) in performance and quantity to the listed product.

Contractor shall submit one lump sum price that includes equipment, installation, taxes, fees, and all scope required for a complete and functional system.

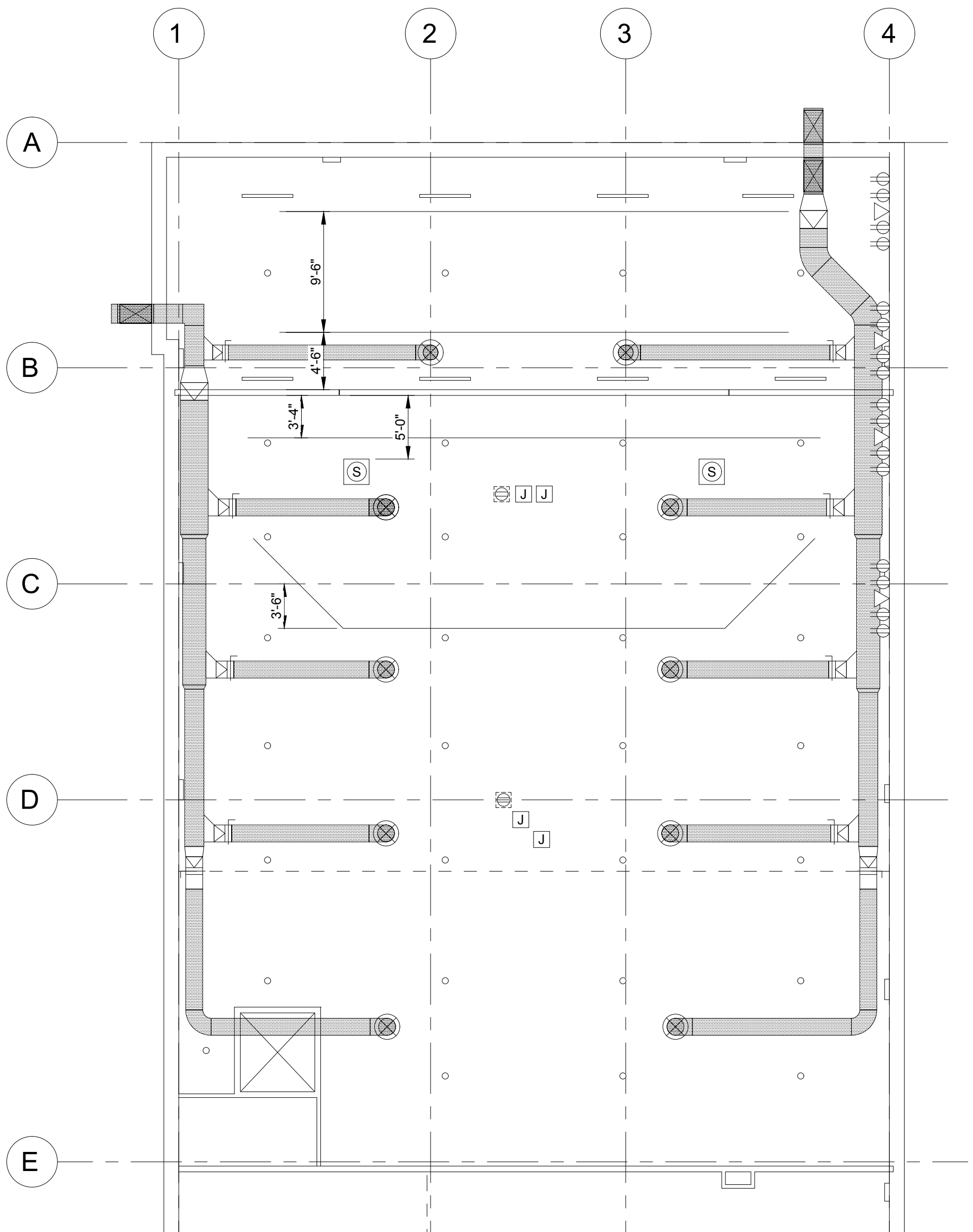
Alternate #1 – Contractor shall include an alternate AV and Lighting package that would decrease the cost of the systems. This package shall still provide the City with a complete and functional system but offer deductions in product quality and or quantity to reach a lesser budget. List BOM and differences between the alternate #1 package and the base bid package.

Alternate #2 - Contractor shall include an alternate AV and Lighting package that would increase the cost of the systems. This package shall provide the City with a complete and functional system and offer upgrades from the base bid package. List BOM and differences between the alternate #2 package and the base bid package.

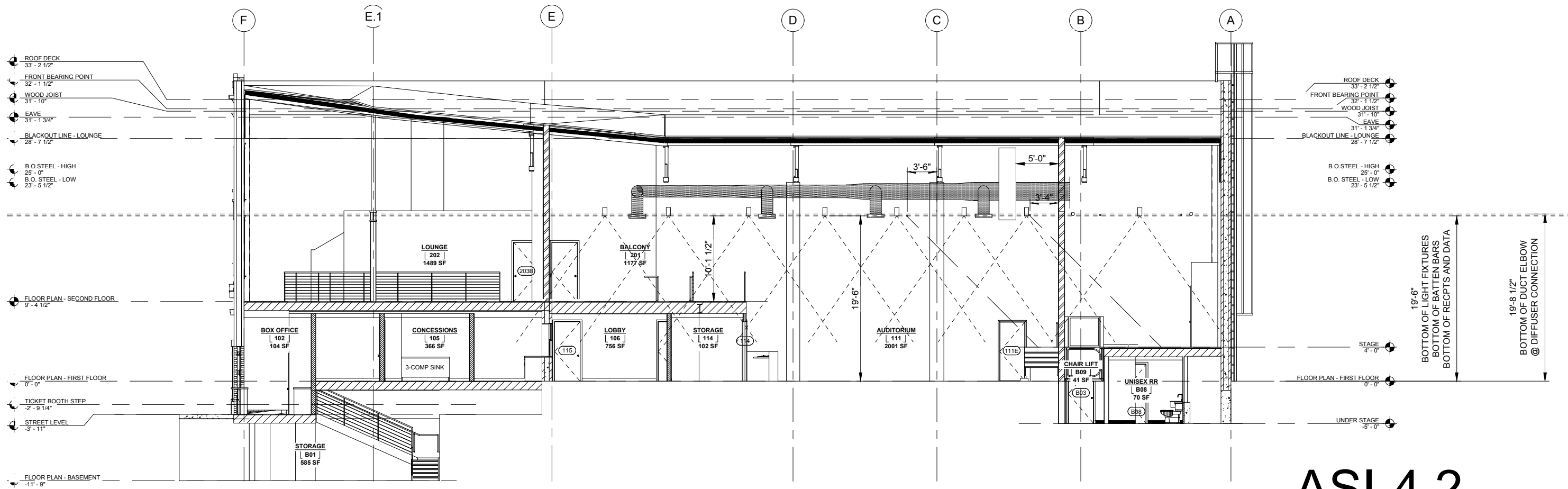
Contractor shall include comprehensive training for the end-user on these systems. All sessions shall be video recorded and turned over to Owner on flash drive. Training sessions shall be split into sessions as follows:

- Audio/Video – Initial Training – Upon completion of project, prior to Final Payment - 2 hours
- Theatrical Lighting - Initial Training – Upon completion of project, prior to Final Payment - 2 hours
- Audio/Video – Follow-Up Training – Within 6 months following completion of project - 2 hours
- Theatrical Lighting - Follow-Up Training – Within 6 months following completion of project - 2 hours

Audio/Video - Scope of Supply		
Product	Basis of Design	Quantity
Control System & Speakers		
Control Surface	Allen & Heath AH-AVANTIS-W-DPACK 96kHz FPGA processing, 64 Input Channels, 24 Fader with dust cover	1
Interface Card	Allen & Heath AH-M-DL-WAVE53-A 64 CH MADI INTERFACE CARD	1
I/O Expander	Allen & Heath DX168 16x8 96k Digital Snake	1
I/O Expander	Allen & Heath GX4816 48x16 96k Digital Snake	1
12" Loudspeaker - Stage Monitor	QSC CP12	2
8" Loudspeaker - Stage Monitor	QSC CP8	2
Microphones & DI		
Microphone	Sennheiser e604	6
Microphone	Shure Beta 56A	1
Microphone	Shure SM57	6
Microphone	Shure SM58	2
Microphone	Shure SM81	3
Microphone	Neumann KMS 105 BK	2
Microphone	AKG D112	1
Microphone	Shure KSM44A	2
DI Box	Radial Pro DIs	4
DI Box	LR Brags acoustic DI	1
DI Box	Whirlwind PCDI	1
DI Box	Whirlwind pod DI	1
Wireless Mic Antenna System	RF Venue Dfin B - with wall mount	1
Wireless Mic Antenna System	RF Venue Distro 04	2
Wireless Mic System	SLXD14D Dual Wireless System with Two SLXD1 Bodypack Transmitters	3
Wireless Mic System	SLXD14D Dual Wireless System with Two SM58 Microphones	3
Storage & Cables		
Storage	Rack Drawers 2U	2
Storage	Rack Drawers 4U	2
Mic Stand	HD Boom Microphone Stand - Tall	4
Mic Stand	HD Boom Microphone Stand - Normal	20
Mic Stand	HD Boom Microphone Stands - Short	10
Stands	Tilt Back Amp Stands	2
Cords	Extension Cords 14 Ga - 15 Ft. with 4 Plugs - Black	15
Sandbag	Matthews 25LB Black Sandbags	8
Cables	XLR Microphone Cables 3'	48
Cables	XLR Microphone Cables 5'	10
Cables	XLR Microphone Cables 10"	10
Cables	XLR Microphone Cables 20"	20
Cables	XLR Microphone Cables 50"	4
Tape	Pro Gaff Gaffers Tape - Black	6
Tape	Pro Gaff Gaffers Tape - Florscent yellow	2
Communication and Listening Systems		
Stage Communication System	Clear Comm System with 4 wireless headsets	1
Assistive Listening System	Listen Technologies LS-55 with 4 Packs	1
Miscellaneous		
	All necessary terminations, mounting, hanging, rigging, etc. as required for a complete system	As Req.
	All necessary interconnecting wiring that has not already been included	As Req.
	Programming, set-up, and troubleshooting for a complete and functional system	As Req.
	Original programming and of software and system settings turned over to Owner on flash drive	As Req.
	O&M manuals with all warranty and product literature - 1 Hard Copy and 1 Electronic on Flash Drive	As Req.
	Owner training as indicated in the RFP	As Req.
Entertainment Lighting - Scope of Supply		
Product	Basis of Design	Quantity
Static LED Fixtures (Front of House)	Altman Pheonix 1 or 3, Chauvet, ETC, or equivalent (Provide 6 for both FOH Batten bars)	12
PAR LED Fixtures (Backstage)	Altman AIP200, Chauvet, ETC, or equivalent (Provide 6 for both back stage Batten bars)	12
Moving LED Profile with Shutters	Chauvet Maverick Force 2 or S, Altman, ETC, or equivalent	2
Console	ETC Ion Xe, Acuity, Chauvet, or equivalent	1
Miscellaneous		
	Integration of house lights into entertainment control system	As Req.
	Terminations and any additional componets as required for a complete and functional system	As Req.
	Power distribution to fixtures from 120V receptacles mounted on wall (locations per plans)	As Req.
	RJ45 to XLR connections and cables as required at fixtures and in tech room	As Req.
	Hanging and focusing of light fixtures	As Req.
	Interconnecting wiring that has not already been included	As Req.
	Original programming and of software and system settings turned over to Owner on flash drive	As Req.
	O&M manuals with all warranty and product literature - 1 Hard Copy and 1 Electronic on Flash Drive	As Req.
	Training as specified in the RFP	As Req.



ASI-4.1
 1/8"=1'-0"



ASI-4.2
 NOT TO SCALE