

ORDINANCE NUMBER 23-01

AN ORDINANCE TO THE CITY OF SOMERSET, KENTUCKY, ANNEXING BY PROPERTY AS DESCRIBED BELOW AND IN ATTACHMENTS TO THIS ORDINANCE, ATTACHMENTS INCORPORATED IN FULL BY REFERENCE HEREIN; AND

WHEREAS, ALL DOCUMENTS AND RECORDS NEEDED TO PROCEED WITH ANNEXATION OF THE PROPERTIES INTO THE CORPORATE LIMITS OF THE CITY OF SOMERSET; AND

WHEREAS, THE PROPERTIES MEET ALL REQUIREMENTS FOR ANNEXATION AS SET FORTH IN KRS AND ALL OTHER APPLICABLE LAW;

NOW THEREFORE, BE IT ORDAINED BY THE CITY OF SOMERSET, KENTUCKY:

SECTION 1.

THAT THE PROPERTIES DESCRIBED BELOW IN ATTACHMENTS HERETO, ATTACHMENTS INCORPORATED IN FULL BY REFERENCE, ARE HEREBY ANNEXED INTO THE CITY'S CORPORATE LIMITS:

A CORRIDOR OF HIGHWAY 461, SOMERSET, KY 42502, FROM PIN OAK DRIVE TO TOMMY ROAD, ENCOMPASSING 31.94 ACRES DESCRIBED HEREIN, AND SHOWN IN THE SURVEY TITLED "CITY OF SOMERSET ORDINANCE No. 23-01", DATED 12-21-22 BY JD LAND SURVEYING, INC.

SECTION 2.

THIS ORDINANCE SHALL TAKE EFFECT AFTER ITS PASSAGE AND UPON PUBLICATION BY LAW.

FIRST READING: January 9, 2023

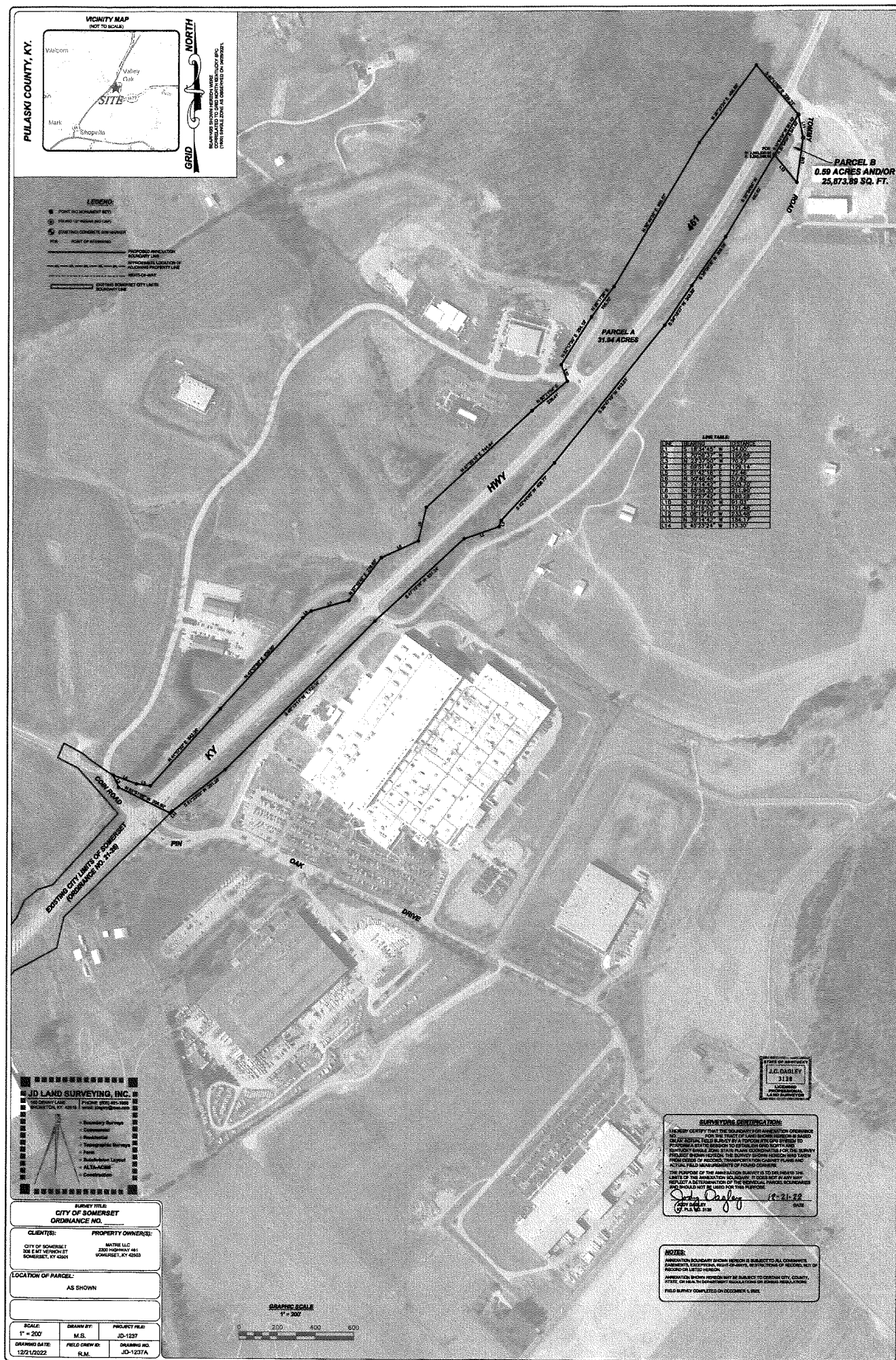
SECOND READING: March 27, 2023

APPROVED


ALAN L. KECK, MAYOR
CITY OF SOMERSET, KY

ATTEST:


NICK BRADLEY, CITY CLERK



DESCRIPTION-PARCEL A

A certain tract or parcel of land lying in the community of Shopville, County of Pulaski on Ky Highway 461, and located at the intersection of Pin Oak Drive and continuing to the Northeastern intersection of Tommy Road and lying on the waters of Buck Creek and more particularly described as follows:

All bearings shown hereon were correlated to Grid North Kentucky SPC (1600) Single Zone, per GPS observations as observed on 04-26-2021.

BEGINNING at a found ½" rebar (no cap) located on the east right-of-way of Kentucky Highway 461, said rebar having a Kentucky Single Zone State Plane Coordinates of North: 3,593,220.64, East: 5,293,046.58; Thence with the east right-of-way of Kentucky Highway 461 the following (7) calls: S 30°54'04" W a distance of 492.62' to a point; Thence S 35°05'09" W a distance of 308.05' to a point; Thence S 34°15'27" W a distance of 248.89' to a point; Thence S 38°47'19" W a distance of 913.51' to a point; Thence S 42°41'48" W a distance of 406.77' to a point; Thence S 18°34'45" W a distance of 34.00' to a point; Thence S 70°56'37" W a distance of 190.86' to a point; Thence crossing the east right-of-way of Kentucky Highway 461, S 47°19'16" W a distance of 631.24' to a point located on the east right-of-way of Kentucky Highway 461; Thence continuing with the east right-of-way of Kentucky Highway 461 the following the following (3) calls: S 45°13'11" W a distance of 1,100.34' to a point; Thence S 51°33'03" W a distance of 351.28' to a point; Thence S 45°23'24" W a distance of 13.30' to a point being a corner to the Existing City Limits of Somerset (Ordinance No. 21-26); Thence crossing the right-of-way of Kentucky Highway 461 and with the Existing City Limits of Somerset the following (2) calls: N 63°51'05" W a distance of 298.92' to a point; Thence N 23°37'50" W a distance of 70.27' to a point; Thence S 69°51'49" E a distance of 129.14' to a point located on the west right-of-way of Kentucky 461; Thence with the west right-of-way of Kentucky Highway 461 the following (6) calls: S 81°42'18" E a distance of 72.46' to a point; Thence N 41°57'52" E a distance of 542.35' to a point; Thence N 42°07'08" E a distance of 639.00' to a point; Thence N 50°46'48" E a distance of 57.62' to a point; Thence N 74°14'42" E a distance of 203.70' to a point; Thence crossing the right-of-way of Kentucky Highway 461, N 37°18'48" E a distance of 278.65' to a point; Thence continuing with the west right-of-way of Kentucky 461 the following (9) calls: N 65°56'30" E a distance of 211.90' to a point; Thence N 12°57'42" E a distance of 180.28' to a point; Thence N 47°35'15" E a distance of 741.64' to a point; Thence N 50°21'04" E a distance of 238.41' to a point; Thence N 20°19'06" W a distance of 91.03' to a point; Thence N 32°17'39" E a distance of 294.19' to a point; Thence N 36°17'36" E a distance of 195.70' to a point; Thence N 30°49'39" E a distance of 865.57' to a point; Thence N 36°23'24" E a distance of 496.68' to a point; Thence crossing Kentucky Highway 461, S 40°41'55" E a distance of 339.21' to an existing concrete right-of-way marker located on the east right-of-way of Kentucky Highway 461; Thence with the east right-of-way of Kentucky Highway 461, S 30°54'04" W a distance of 241.42' to the **POINT OF BEGINNING** of the annexation described hereon and having an area of **31.94 acres**, according to a field survey completed on 12-01-2022 and

performed under the direct supervision of Jody Dagley PLS 3138, with JD Land Surveying, Inc.

Above described annexation is subject to all easements, exceptions, right-of-ways, covenants, and restrictions of record or that may apply.

Jody Dagley
Jody C. Dagley

12-21-22

Date



Parcel A KY 461 From Coin Rd to Tommy Rd
Parcel B Parcel ID 102-0-2-36

